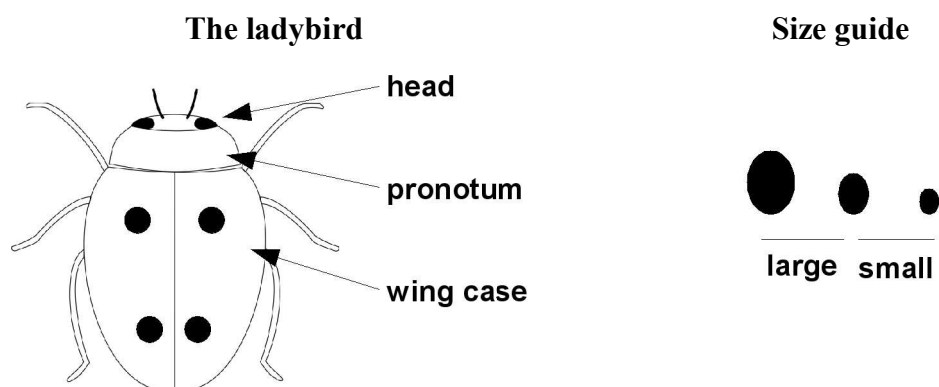


Guide to the Ladybirds of Britain

First go to the section corresponding to the overall colour of the ladybird to identify. Then, read statements a, b and c within and select the correct one. Then, read the statements within to select the statement that applies. Continue until the description matches the ladybird. The common name of the species is indicated in bold characters to the right of each description. The accompanying number refers to the matching illustration.



Wing case Orange to Red

a-Pronotum mostly Black:

a₁-with a **White patch** on each side and:

- large size: -usually with 7 spots on wings, black legs.....**7-spot** (1)
- same but underside with a white patch at the base of the last 2 pairs of legs (4 in total) and found exclusively near wood ants nests.....**Scarce 7-spot** (1)
- small size: -usually with 11 spots on wings.....**11-spot** (2)
- usually with 5 spots on wings; found on river shingle (in Wales and Scotland only).....**5-spot** (3)

a₂-with various **White patterns** and:

- large size: -often with a creamy rim and with 0 to 23 black spots on wings usually with a cream ring; on conifers.....**Eyed** (4)
- flat shape, usually with 13 spots on wings and black legs with brown tip; in wetlands.....**13-spot** (5)
- small size: -flat shape, usually with 7 spots on wings (mostly towards the rear) and black legs with brown tip.....**Adonis** (6)
- with 2 black spots on wings or varied banded patterns, underside all black.....**2-spot** (7 + 8)

b-Pronotum mostly White:

- b₁**-with **5 black spots** or other marks, small body with 0 to 15 spots on wings, underside all or partly brown.....**10-spots** (9)
- b₂**-with **various marks** but always white along both sides, large body with 0 to 21 spots on wings and brown legs.....**Harlequin** (10)
- b₃**-with **5-7 black spots**, large body with 0 to 20 spots on wings and cream streaks.....**Cream-streaked** (11)

c-Pronotum Orange or Red:

- c₁**-with **no markings**, large size, russet coloured with 11 black spots on wings, covered in fine hairs; found on white bryony.....**Bryony** (12)
- c₂**-with **6 black spots**, small size, flat shape, many spots on wings, brown legs; found in wetlands.....**Water** (13)
- c₃**-with **various markings**, small size, reddish-brown with 0 to 26 spots on wings, covered in fine hairs.....**24-spots** (14)
- c₃**-with **pale spots**, small size, usually with 16 white spots on wings, orange legs; found on trees.....**Orange** (15)

Wing case colour Yellow

a- with distinct **Black line** along the back and:

-small size with 13 to 18 spots on wings, including 3 side spots often fused, spots on pronotum
..... **16-spot** (16)

-small size usually with 14 rather rectangular spots and brown legs..... **14-spot** (17)

b- with **no Black line** along the back and:

-small size: -flat shape, with many black spots on wings and 6 on pronotum, brown legs;
in wetlands..... **Water** (18)

-bright yellow with 22 black spots on wings and 5 on pronotum..... **22-spot** (19)

-wing case often with pale rim and with 0 to 15 spots, legs + underside all or
partly brown..... **10-spot** (20)

-large size: -with 0 to 21 spots on wings and brown legs, pronotum varies but always white
along the sides..... **Harlequin** (21)

-with 0 to 20 spots on wings and pale streaks, pronotum with 5 to 7 black spots;
found on pine trees..... **Cream-streaked** (22)

Wing case colour Brown

a- Large size, chestnut-coloured with **Cream stripes** and **spots**, brown legs; on Scots pine.... **Striped** (23)

b- **Small size** and:

-**Cream spots**: -usually chequered pattern, legs and underside all or partly brown..... **10-spot** (24)

-14 spots arranged in several lines across the wings, brown legs..... **Cream-spot** (25)

-14 to 18 spots on wings including an angular middle spot; found on
Scots pine..... **18-spot** (26)

-**Black spots**: -0 to 7 spots or curved lines on wings, pronotum black with white patch
on the sides; found on heather..... **Hieroglyphic** (27)

-0 to 10 small black marks on the wings, pronotum brown with dark
'M' mark; found on larch..... **Larch** (28)

Wing case colour Black

a- **Normal shape** and:

-large size with 0 to 21 spots on the wings, brown legs, pronotum mostly black but always
white along the sides..... **Harlequin** (29)

-small size and:

-usually 2 red spots on wings or various banded patterns..... **2-spot** (30)

-0 to 7 spots or curved lines on wings and pronotum black with white patch on the
sides; found on heather..... **Hieroglyphic** (31)

-0 to 15 red or yellowish spots on the wings, legs and underside all or partly brown
..... **10-spot** (32)

b- **Dome-shaped** body, small size:

-with a distinct rim around the wing case and:

-2 large (sometimes kidney-shaped) red spots near the top; found in woodlands
..... **Kidney-spot** (33)

-2 to 4 red spots including 2 comma-shaped spots at the front (not reaching the edge);
found on trees..... **Pine** (34)

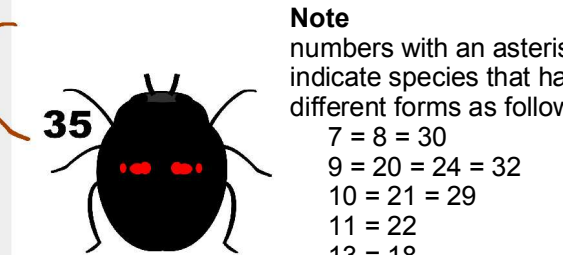
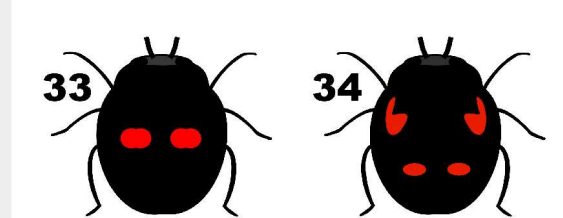
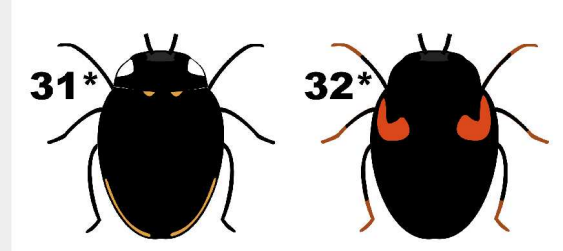
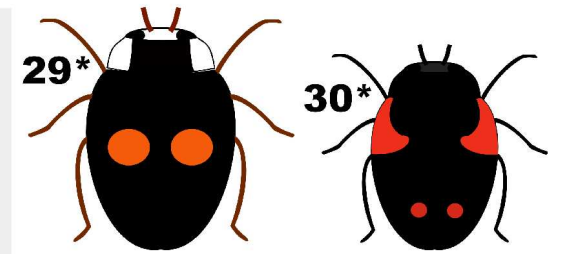
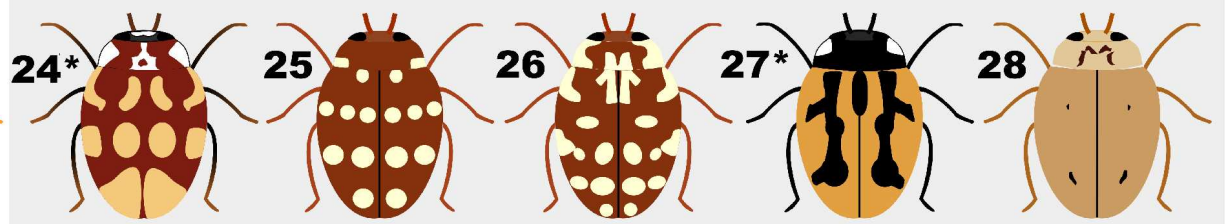
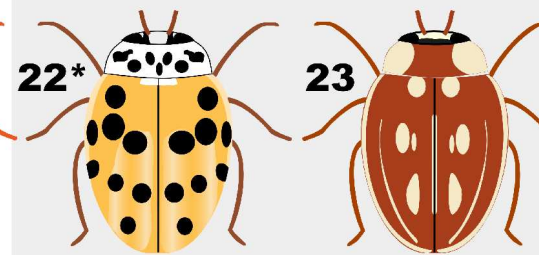
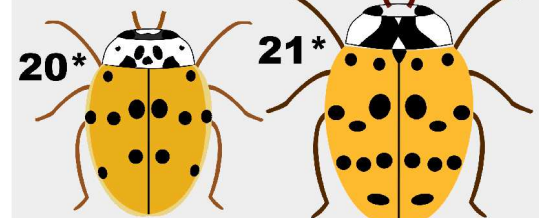
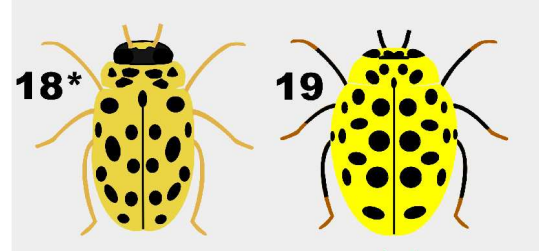
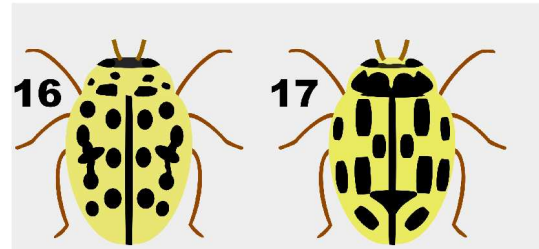
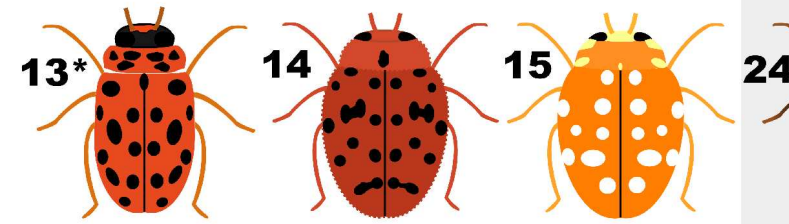
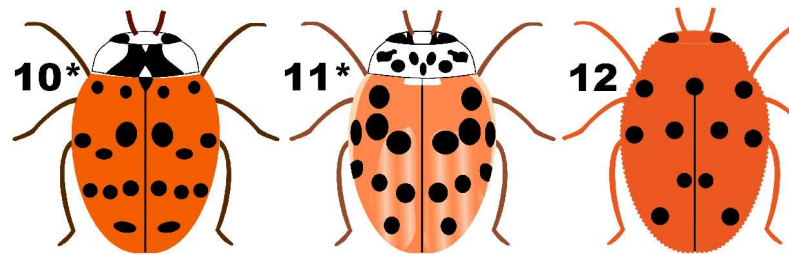
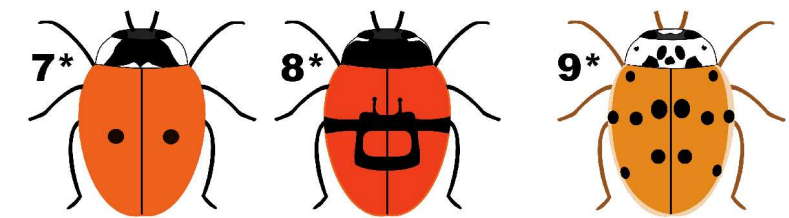
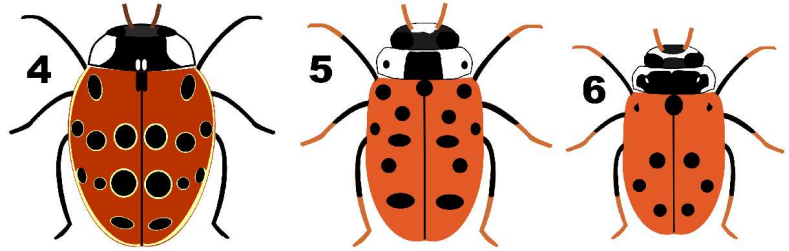
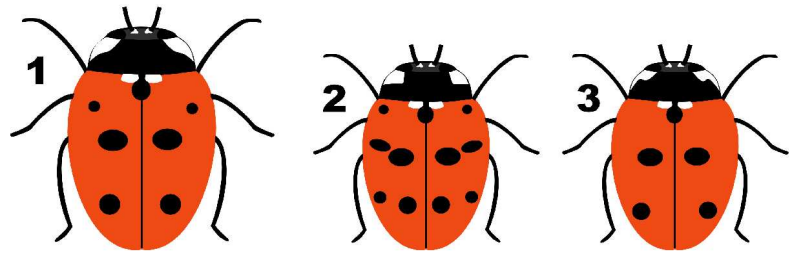
-no rim around the wing case and with 2 to 6 red spots forming 2 small bars across
the wing case; found on heather..... **Heather** (35)

Note that colours and patterns do vary therefore the descriptions above should be taken as indications only.

Red-Orange ladybirds

Yellow-Brown ladybirds

Black ladybirds



Note
 numbers with an asterisk
 indicate species that have
 different forms as follows:
 7 = 8 = 30
 9 = 20 = 24 = 32
 10 = 21 = 29
 11 = 22
 13 = 18
 27 = 31